

### 9 Locke Street ESSENDON VIC

4  2  4 

Nestled in idyllic gardens on land approximately 600sqm, this property invites the whole family to experience a unique lifestyle. Moments from elite private schools, parks and vibrant shopping strips this meticulously maintained four bedroom, two bathroom period home offers a dress circle locale and plenty of room for the family to thrive.

With Edwardian origins and a sympathetic modern renovation, the versatile layout features beautiful leadlight entry, fretwork hallway and an elegant lounge graced with decorative high ceilings, box bay window and traditional open fireplace with cast iron insert, ornate tiles and timber surround.

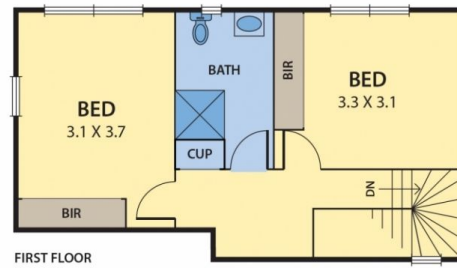
Warm and inviting interiors continue with contemporary open plan living, dining zones and custom designed kitchen, featuring Smeg dual fuel cooker, stone island and

**Type** : House  
**Land Size** : 600 sqm  
**View** : <https://www.peterleahy.com.au/sale/vic/north/essendon/residential/house/7434976>



**Peter Leahy**  
03 9350 5588

[For full version visit the website](https://www.peterleahy.com.au)



DISCLAIMER:

Please note plans are indicative only and not drawn to exact scale.  
All dimensions are approximate