

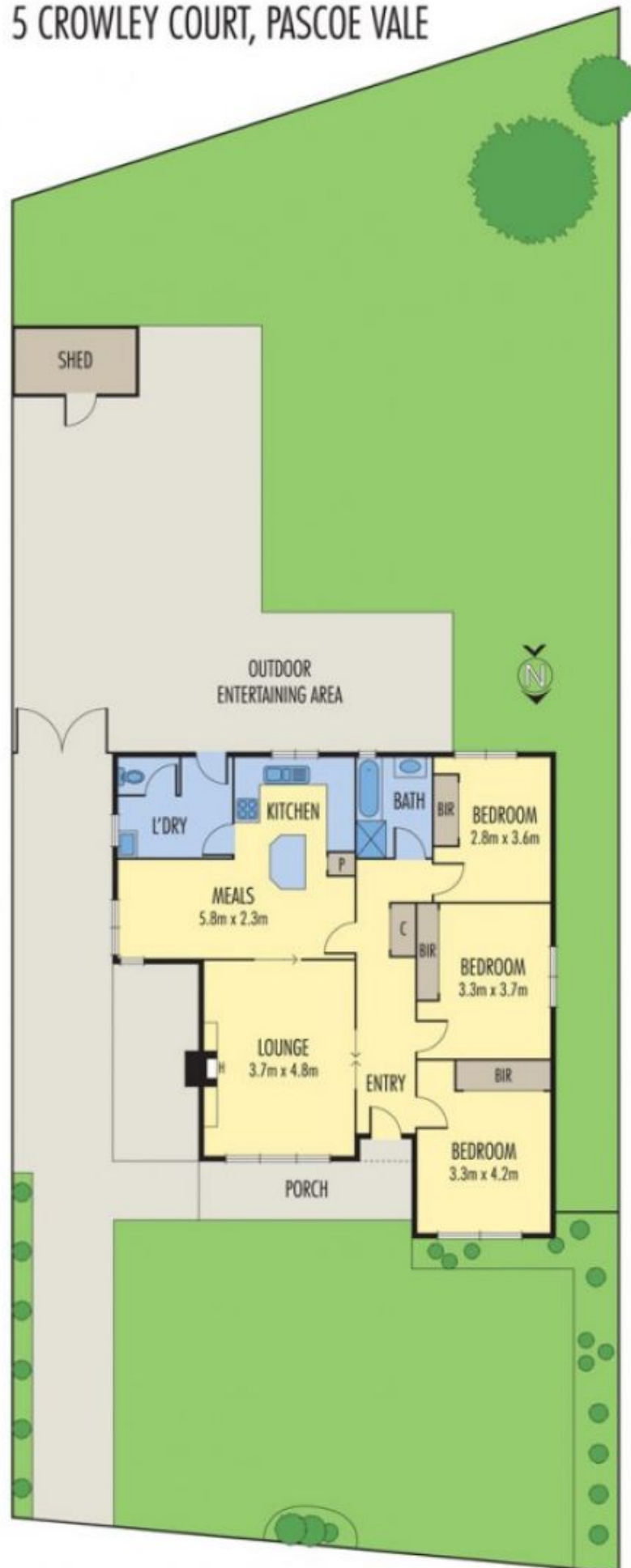
5 Crowley Court PASCOE VALE VIC

3 1 2

Positioned in arguably one of Pascoe Vale's most convenient locations, sits this brick family residence on a good size allotment. Comprising of 3 Bedrooms with B.I.R, Kitchen meals area, separate lounge, laundry, outdoor entertaining area and large yard. Additional features include polished timber floor, central heating, gas heater, evaporative cooling, high ceilings and modern kitchen. With this fantastic location, positioned in a quiet court location with excellent amenities within a stroll including trains, shops, cafes, reserves, schools and Northern Golf Club. This property ticks all the boxes.

Type : House
Land Size : 560 sqm
View : <https://www.peterleahy.com.au/sale/vic/north/pascoe-vale/residential/house/7434812>

5 CROWLEY COURT, PASCOE VALE



Disclaimer: Please note plans are indicative only and not drawn to exact scale. All dimensions are approximate. Potential buyers should satisfy themselves of any pertinent matters.